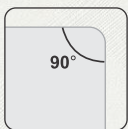




- Premium quality faux leather.
- Available in 8 ft x 4ft
- Also available in 10 ft x 4 ft (as per order)
- Thickness 2mm (-/+ 10%)
- Bending upto 90*
- Customisation requires minimum qty

Note :

- It is Highly recommended to use machine cutter for better finishing.
- To achieve 90* bending it is highly recommended to use the v groove cutter.



90° BENDABLE



**ENVIRONMENT
FRIENDLY**



**100% WATER
RESISTANT**



**FIRE
RETARDANT**



**NO
FORMALDEHYDE**



**BORER
FREE**



**TERMITE
RESISTANT**





POLO

1001 ICED COFFEE



POLO

1002 NEPTUNE



POLO

1003 TAUPE



POLO

1004 DESERT SAND



POLO

1005 PORTLAND GREY



POLO

1006 GRPHITE



POLO

1007 PEARL GREY



POLO

1008 GREY STONE



POLO

1009 PRUNE



POLO

1010 CHESTNUT



POLO

1011 COYOTE BROWN





POLO

1013 OYSTER GREY



POLO

1014 LOTUS



POLO

1015 MUSTARD



POLO

1016 OLIVE GREEN



POLO

1017 SHADOW



POLO

1018 MIDNIGHT



POLO

1019 MISTY BLUE



POLO

1020 CHARCOAL GREY





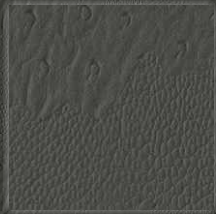
OSTRICH

2001 ICED COFFEE



OSTRICH

2006 GRAPHITE



OSTRICH

2008 GREY STONE



OSTRICH

2010 CHESTNUT



OSTRICH

2020 CHARCOAL GREY



CROC SERIES



CROC

3002 NEPTUNE



CROC

3004 DESERT SAND



CROC

3006 GRAPHITE



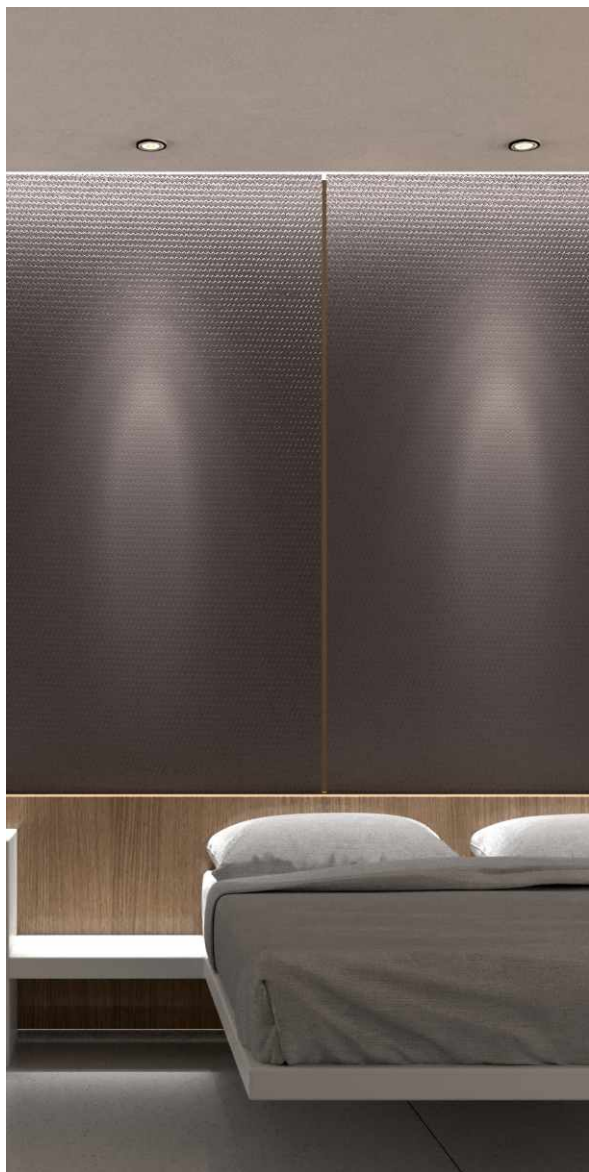
CROC

3008 GREY STONE



CROC

3010 CHEST NUT



SOUL SELECT
ART LEATHER

HONEYCOMB SERIES



HONEYCOMB

4003 TAUPE



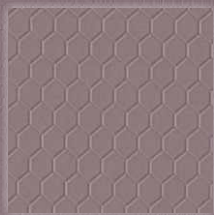
HONEYCOMB

4009 PRUNE



HONEYCOMB

4010 CHESTNUT



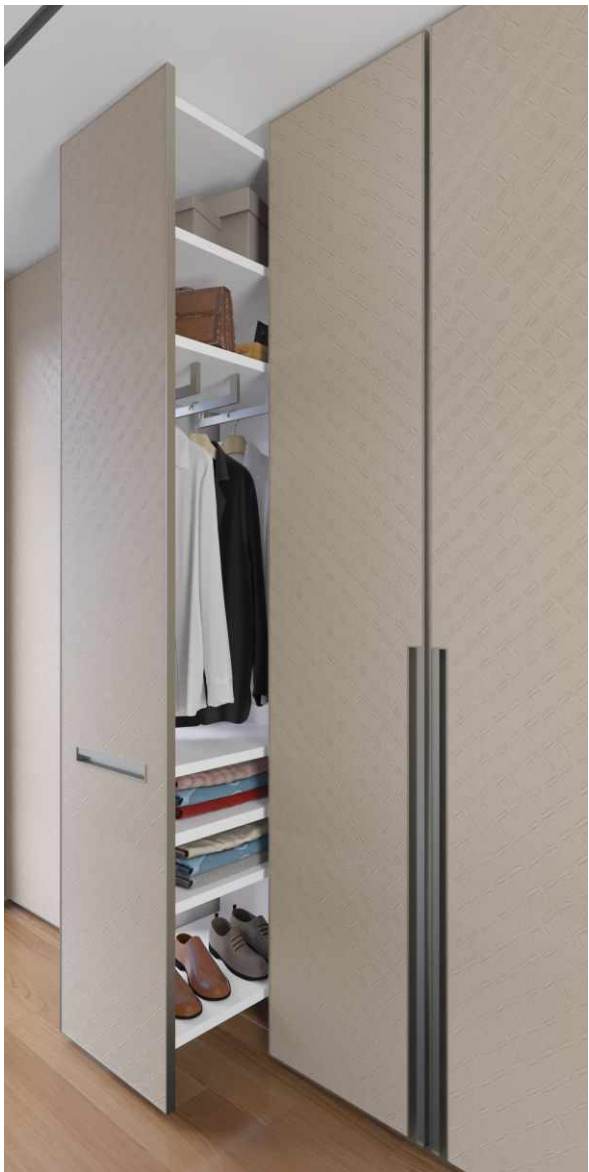
HONEYCOMB

4014 LOTUS



HONEYCOMB

4018 MIDNIGHT





QUILTED

5003 TAUPE



QUILTED

5004 DESERT SAND



QUILTED

5008 GREY STONE



QUILTED

5012 DUNE



QUILTED

5020 CHARCOAL GREY



METTALICA SERIES



METTALICA

7001 PEARL



METTALICA

7002 COPPER



METTALICA

7003 GOLD



METTALICA

7004 BOTTLE GREEN



METTALICA

7005 LOTUS



Do's :

- Use non abrasive damp cloth to clean.
- To remove minor stains use mild household cleaners.
- Cover the edges with profiles to hide the open edges.

Don't :

- Do not use pencils, markers, pens or abro tape on the product.
- Do not expose the laminate to open flames.
- Do not use abrasive liquid cleaners, bleaching compound as they may damage the surface.

Important notes :

- There may be shade variation for batch to batch.
- Actual colour of the laminate sheet may vary from the catalogue.
- Any kind of bubble or delamination will not be entertained after the application.
- After cutting the laminates no complaints will be entertained. Hence please check thoroughly before using the laminate.